

GRWA Shorelines

The Gananoque River Waterways Association

Box 15 Lyndhurst, ON KOE 1N0

www.harringtons.ca/GRWA/

Member of The Biosphere Network: www.biospherenetwork.com

April, 2005; v. 4, #1

MARK YOUR CALENDARS

President's Letter

Since our AGM of last year, we have been very busy as your executive and representatives for the Gananoque River Waterways Association.

At our last AGM, we established some committees to try to share the efforts of our organization among those members with specific interests. These committees are just getting off the ground and if you have an interest to help out, we will gladly accept volunteers.

Once again a great deal of our activity has been centered around the Township's draft Official Plan. That went before a special community committee and their recommendations are included. Our input to the plan was particularly successful when it dealt with waterfront lot sizes and set backs for buildings and for septic systems.

We also took a great interest in developments on Red Horse Lake and Lost Bay Lake.

All of us are learning more everyday about our environment and some of the very special characteristics of our area through the relationship we have with the Biosphere Network. We are part of a highly sensitive and biologically diverse ecological area and we have a lot of natural assets to protect for all to enjoy.

A recent effort has been to research the possibility of a Paddling Route from Lyndhurst to the St. Lawrence River. This could have healthy impact on our community's tourism and economics as well as to open the area for the appreciation of its richness by others.

Our committees include forestry; fish and wildlife; environment; municipal activities; safety and boating; social events; economic activities and others. If you are interested, please let us know.

Welcome to a new season on the River and thanks to all who continue in their efforts to support the River.

Mary Kaiser O'Connor

April 25, 7:00 pm at Lyndhurst; The Township will vote to adopt its **Official Plan**, the most critical governing document for the next 20 years. It then goes to the Ministry of Municipal Affairs for final approval and posting on the Environmental Registry. It could be in force by June. The latest draft is on the website: www.townshipleeds.on.ca "OFFICIAL NOTICES"

May 27, meeting of **Red Horse Lake residents** 7:00 to 9:00 at the Lyndhurst Council offices to learn and decide what might be done for the Lake (See page 5 for more details.)

June 17, 5:00 pm to June 18, 5:00 pm BioBlitz at Lost Bay Reserve; info Anne Robertson, 613 389 6742 or n8ture1@sparrow.phy.queensu.ca

July 1, Seeley's Bay Canada Day Celebrations; 9:00 pm

July 2, **GRWA Annual General Meeting**; 10:00am, Kendrick Park, Short Point Rd north of Lyndhurst **ALL ARE WELCOME TO PROMOTE AND ENHANCE OUR COMMUNITY ALONG THE WATERWAYS**

FOR (GRAND)CHILDREN ages 6 to 11; Mon. to Fri. at Landon Bay Centre and pool; some transportation
July 4 – Aug. 28 Frontenac Arch Biosphere Nature Camp
\$100 per week; 8:30 to 4:30

July 4 – Aug. 19 Red Cross Swim Kids
\$35 per session; various times depending on level
Contact Darren, 659-4824 or 1-866-220-2327

July 14 – 17, Lansdowne Fair

Aug. 27 **HOUSEHOLD HAZARDOUS WASTE COLLECTION**
1 to 4 pm; **Leeds County patrol garage on Cty Rd 3**
Bring in containers with left-over paint, turpentine, wood stain & preservative, furniture stripper, BBQ starter, household cleaners & disinfectants, garden products such as fungicides & herbicides and pool chemicals; fire extinguishers & aerosol containers

SAFETY TIPS:

Never mix products together.
Make sure the lids are sealed tightly.
Leave the labels on.

Sep. 10 – 18, **Great Canadian Shoreline Cleanup**
www.vanaqua.org/cleanup

ZEBRA MUSSELS (ZM) – The GOOD, the BAD and the UGLY

The GOOD NEWS is that both Fodey and Killenbeck Lakes tested totally free of the ZM veligers, the microscopic larvae; the challenge is to keep these lakes free of ZM. Also GOOD NEWS is no spiny water fleas are in any of the Gananoque River Waterways. This is a bonus as spiny water fleas are *an introduced plankton species that have been shown already to reduce the biodiversity and number of zooplankton in Lake Ontario and the Five Finger Lakes in NY.*

The BAD NEWS is that all along the main Gananoque River system – Lyndhurst, Singleton, Red Horse, Lost Bay and Gananoque Lake – there are mature zebra mussels already forming large adult colonies.

The UGLY NEWS is what we have to both learn to live with the ZM and work more diligently to keep out even more ugly invasive species such as the Rudd and the Round Goby already found in the Great Lakes. Cherish Gamble from the Ontario Federation of Anglers and Hunters, Invasive Species Hotline 1-800-563-7711 did the tests and helped write this.

The Gan ecosystem is an accessible waterway that is widely travelled/used – providing greater opportunity for introductions. Research has found that invasive species tend to thrive in disturbed habitats. Zebra mussels in the Gan system can and will drastically alter the ecology of the system which in turn could make the area prone to other more drastic invasions; for example the introduction of the aggressive round goby, which feeds on ZM, reaches densities of more than 100 individuals/m², also feeds heavily on the eggs of sport fish such as bass and is a huge nuisance to anglers. Interactions between round goby and the zebra mussel have also been linked to botulism type E outbreaks which have killed thousands of fish-eating birds such as loons and mergansers.

Water intake pipes must be protected from becoming clogged with ZM colonies. *Research has found that only filters with an absolute pore size of 20 microns are effective. If the filter doesn't need to be removed daily, a weekly cleaning is suggested- especially when temperatures are above 12 C as this is the temperature that veligers will be present and are more likely to be introduced into the intake/system. If dense populations of ZM do become present around the intake and you are drawing water directly from the lake for drinking purposes - you do run the risk of fouling water due to the presence of feces. [See ShoreLines, Apr, 2004 on the GRWA website for an example.]*

Boat motors/cooling systems need protection from becoming fouled with ZM (not a nice procedure removing ZM from them). *Before docking, run the motor at high speed for about 15 minutes to flush the system and keep the motor out of the water when not in use. (There are also controls available for inboard engines that cannot be lifted from the water.) All boats and paddles that are transported from the Gan. Waterways to other waters or brought to our system, should be washed with high pressure water or very hot water OR dried for at least 5 days. Vessels should be removed from a water body instead of being moored for long periods of time. Keep them off the dock as*

over time build-up will foul its structural integrity. Visitors/guests should be educated. Spiny water flea has resilient eggs that can survive for almost 2 weeks out of water - they are commonly spread by anglers. If your visitors are bringing their own live bait and equipment, this bait should be disposed of on land, and all equipment rinsed with hot water and dried thoroughly.

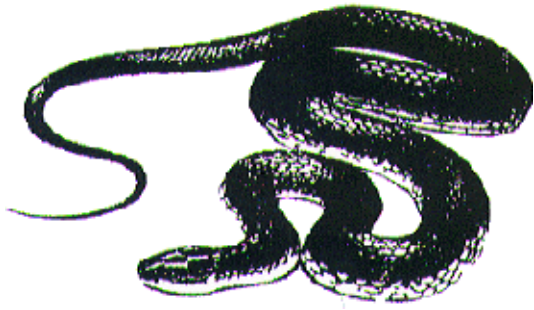
Scaup, smallmouth bass, and a variety of other fish and diving ducks will feed on zebra mussels. Although this may seem like a good thing, ZM can introduce contaminants into these animals through bioaccumulation. Scaup have substantially declined; researchers are currently looking at their predation of zebra mussels as a contribution to this decline www.bsc-eoc.org/lpbo/scaup.html. Zebra mussels feed by filtering planktonic organisms from the water - during this process ZM ingest contaminants that may be present in sediment/systems. When an animal then eats ZM, it also ingests these contaminants. ZM thus will "clean up the lake" in the sense that they do increase water clarity; however there are a few issues with this increased water clarity:

1) *The planktonic organisms removed by the ZM are the base of our food chain so the removal/altercation of this level in the food chain is simply not a good thing as it affects all levels either directly/indirectly.*

2) *Increased water clarity has been proven scientifically to increase the growth of aquatic plants - more sunlight=increased photosynthesis=more plants. From first hand experience, this weed growth can be very excessive, making navigating in shallow waters difficult, even making some favourite fishing spots inaccessible.*

3) *Lake trout prefer deep, cold (below 10 C) waters but ZM establishment will filter the water and allow more sunlight to penetrate further into water column, into areas which it has previously not been. This could potentially "shrink" the amount of preferred habitat available to them because the water is warmer and because an increase in algae growth can reduce the desired amount of oxygen available (below 7 mg/L).*

While the direct effects of zebra mussels on lake trout populations are still not well understood it is recognized that the cumulative effects of multiple invasions of species such as the zebra mussel, rock bass, and others will alter the lake ecosystem to the detriment of native species. For more: www.invadingspecies.com or 1-800-563-7711



**BLACK RAT SNAKE:
Live & Let Slither**

As Canada's largest snake the black rat has a much maligned reputation although it is really quite docile, loving to sun on the rocks. The largest creature that it might subdue with a lot of luck, is a squirrel. Nonetheless, its status is "threatened" and it is protected under both Conservation and Planning Acts. But as many of you may know already, the Frontenac Arch is one of only two areas in Canada where it still exists. You can help protect this and other wildlife such as turtles by carrying a shovel in your car even if there is no snow. The shovel can be used to move these slow moving animals off the road so they can continue their appointed journeys. Also, if you come across roadkill, shovel it to the side so that the scavengers are not in danger as well. For more info:

Ontario Ministry of Natural Resources,
Shaun Thompson, 613-258-8235x235,
shaun.thompson@mnr.gov.on.ca

**MY FAVOURITE PLACE on the
Gananoque River Waterway**

In this membership form survey, the most often cited is "MY VERY OWN SHORELINE". Two responses said, "WE LOVE ALL OF IT".

For specific sites, Lost Bay wins the gold ribbon with Red Horse Rock coming in second. Other wonderful places are Blueberry Island, The Crank, Lyndhurst Bridge and the portage to Charleston Lake.

"I like all the long stretches of undeveloped land [that remind] me of the beautiful areas in northern Ontario".

Management Planning For Riparian Ecosystems –
A Case Study of the Northern Map Turtle (*Graptemys
geographica*)

Field Season Update

What an exciting time for a field researcher! The spring weather has finally arrived, and with the melting of the ice on Lost Bay I am now gearing up for my field research on the Northern Map turtle. For those that might want background information on my overall work the GRWA Fall 2004 newsletter, now on the GRWA website, has a full account of my research objectives.

Overall, from April until August I will be gathering biological data and observing spatial movement patterns of the Northern Map turtle population of Lost Bay. It is important to learn about a species biological characteristics and habitat use so that proper management practices can be implemented. In order to capture the turtles I have constructed floating pitfall traps. When the traps are operational they are checked frequently for turtles. Turtle captures will also be attempted with the use of dipnets. Once turtles have been captured, their sex, size, and weight will be logged. Turtles will then receive temporary ID codes on their shells for future identification throughout the summer months. The ID codes will be lost late summer when the turtles shed their scutes. This method of field marking was adopted from other research projects with turtles that did not use radio-telemetry tracking for spatial analysis. Detailed data will also be gathered from the map turtle's nesting sites. For example, soil type, vegetation, air/water/soil temperature, soil moisture, light units, and wind speed etc. will be logged.

If residents in the area observe a marked turtle please feel free to send me an email of the location.

I am looking forward to the summer and hope to gain a much greater understanding of the Lost Bay map turtle's overall population and use of habitat.

Thank you to all those that have helped me prepare for this field season. Your local support is greatly appreciated.

Katherine Beehler
University of Waterloo
kmbeehle@fes.uwaterloo.ca

**4 volunteers are needed for
MOE's Lake Partner Program on
LYNDHURST & SINGLETON LAKES plus LONG
REACH and EAST BASIN of RED HORSE
LAKE.**

The Ministry of Environment asks you to go on the lake twice a month to check the clarity of the water and take samples for phosphate tests from May to Oct. Each time takes about 40 minutes. To sign up: 1-800-470-8322

www.ene.gov.on.ca/envision/water/lake_partner

Frontenac Arch Biosphere

At the Annual General Meeting on January 29:
Adoption of our new shortened name,
the Frontenac Arch Biosphere (FAB)

Our priority projects and programs in Environment,
Economic and Social Activities, as well as the FAB
Infrastructure, were reviewed and
recommendations made to the Board for 2005.
Some of the highlights include the creation of a
Biosphere Cultural Council and a Biosphere
Economic Integration Strategy. Priority highlights
from 2004 to continue included the Local Flavours
initiative, Healthy Shoreline Reviews, Connecting
the Core Landscape initiative and continuing to
grow our membership (organizations and
individuals).

Launch of Canadian Parks and Wilderness Society's
Thousands Islands Ecosystem Community Atlas.

See <http://www.cpaws.org/community-atlas/> or
connect with Bonnie Mabee to borrow the CD

Significant events upcoming:

Norm Ruttan has moved and **Don Ross** is the Executive
Director. GRWA thanks Norm for his leadership.

Parks Canada (St. Lawrence Islands National Park) is taking a
leadership role within the Biosphere in Landscape Level Planning
and Species at Risk with a meeting at the Donald Gordon Centre on
February 22 bringing together Ontario Ministry of Natural
Resources, Eastern Ontario Model Forest, Ontario Parks, Parks
Canada, the Land Trust and others to determine priorities and
obtain funding.

Development of a PowerPoint Presentation for area municipal councils
is ongoing.

Local Flavours is working to find funding for the program for spring
2005 to encourage local productions and purchases.

Some individuals have come together to look at the potential for farm
bio-digesters together with ethanol production and greenhouse
heating in the Biosphere Reserve area. Thanks to **Cameron
Smith**, [a GRWA member,] for this initiative.

The Day Camp project has secured funding from the Township of
Leeds and the Thousand Islands, the Town of Gananoque, St.
Lawrence Islands National Park of Canada and the Ontario
Ministry of Tourism and Recreation. Thanks to John MacLeod for
his continuing leadership. [See p. 1]

Biosphere Exchange www.biosphereexchange.com

A great new free service for:

Residents-Households to donate or to sell items that
are less than \$100 instead of sending to landfill.

Contractors and Industries to donate or sell leftover
building materials or ends of manufacturing processes.

people needing a Ride Share on the most common
routes in the area-to and from Kingston, Brockville,
Gananoque, Westport, Smith Falls, etc.

ONTARIO BREEDING BIRD ATLAS

GRWA member **Bud Rowe** is working on the last year
of this 5-year project. If you see evidence of nesting by
unusual birds contact him: 613-545-0720 or
budrowe@kos.net

CANADA'S "Project Green"

Ontario had a smog alert for the first time ever in
winter – 5 days in February. The Kyoto Protocol, an
international climate change agreement, entered into
force on February 16th, 2005, setting binding targets for
developed countries to reduce greenhouse gas emissions
(which become smog) an average 5.2 % below 1990
levels. Kyoto's emission targets become binding legal
commitments for those countries such as Canada, which
ratified it in 2002. But Canada's "Project Green" plans
are already in difficulty because our economic growth in
the last 3 years has increased emissions much higher
resulting in our target reductions now being over 275
megatonnes, up from the initial forecasted reduction of
240 megatonnes.

The Pew Center on Global Climate Change has
created a special section looking at the implications of the
Protocol including history, related issues and reports and
analyses. To learn more:

<http://ealert.pewclimate.org/ctt.asp?u=438833&l=78466>
www.ontarioconserves.gov.on.ca/english/index.asp

You personally can help in two ways:

Reduce your own personal emissions through the
One Tonne Challenge by paddling, walking and
biking more instead of driving. This may also be
better for the lungs and the muscles.

To learn more: 1 800 O-Canada (1 800 622-6232)
www.climatechange.gc.ca/onetonne/english

Increase the absorption of emissions
by planting trees available from the

Cataraqui Region Conservation Authority



Order your trees now for spring planting.

Call **Rick Knapton**, CRCA forestry
technician at (613) 546-4228 ext. 247 or
(613) 389-3651 or

www.cataraqueiregion.on.ca/services/treeOrderform2004.pdf
[festions](#)

Trees Ontario's Forest 2020 Program Forest
2020 offers private landowners the opportunity to plant trees
on underutilized lands (e.g. abandoned farm land), at a fraction
of the costs normally associated with tree planting. In
exchange for maintaining and managing the trees for 15 years,
and agreeing that any carbon credits associated with the trees
planted will be applied towards reducing Canada's greenhouse
gas emissions under Kyoto (i.e. assigning carbon rights to the
Federal Government), for the fee of \$550/hectare, landowners
will receive site visit, trees, site preparation, planting and one
year of tending.

Connect with Rick Knapton, CRCA, as noted.

Red Horse Lake/Long Reach – A Trout Lake Worth Saving

Integrated summary of 1) Minutes from meeting of CRCA, Township, MOE, MNR, MMA, County (UCL&G) held on Nov. 23, 2004 – released to GRWA Board on Jan. 7, 2005; 2) phone conversations with Andrew Marshall, CRCA on Feb. 4 & 11, 2005; 3) GRWA Board Meeting, Feb. 6, 2005

1) New evidence given on Nov. 23rd shows that “**Septic systems are the main problem with phosphorus.**” and “**septic systems may have a greater impact on the water quality in the area directly adjacent to shore than do upstream activities.**” So this meeting concluded that approval from CRCA, as one of the commenting agencies, of all applications for severances to the County Land Division for properties on Red Horse Lake, would carry the condition that all septic system discharges have a 300 metre setback or that an Environmental Impact Statement (EIS) be prepared to the satisfaction of CRCA and MOE which demonstrates that the septic systems will have “**no impact**” on the water quality of RHL. Under the current guidelines, these agencies can only recommend to the Land Division Committee. However, it was agreed that if the severance applications are granted without this condition, then the CRCA staff will most likely appeal the decision to OMB. Staff from MOE have indicated that they would support such an appeal, as would GRWA.

Another recommendation from the Nov. 23rd meeting is that MOE and CRCA would make a presentation to Council, as it is the other commenting agency to Land Division, to show the Township why it is important to support the 300 m discharge setback or EIS condition as a means of protecting lake trout habitat. A united policy from both commenting agencies for RHL would be a huge step forward. CRCA has been in touch with its representative on Council, Dennis Arrowsmith.

2) Role of GRWA:

1) **conduct water quality testing**, if necessary, essentially to determine the level(s) of dissolved oxygen.

2) **educate all members on the need for reduction of phosphate use**, e.g. buy phosphate-free dishwasher detergents, **and ways to mitigate the seepage of phosphates into the water**, e.g. 30 m of shoreline naturalization and voluntary septic inspections.

3) **promote the Township meeting for all members, particularly** to hear what CRCA, MOE and MNR etc. are saying and why. [Meeting not scheduled yet.]

4) **promote, with other Township groups, a Township septic tank inspection bylaw** following the adoption of the Official Plan.

5) **set up a special meeting of all RHL residents on May 27 at the Lyndhurst Township office, 7:00** to determine the best courses of action.

6) **support CRCA by writing to the County Land Division** concerning the current 11 applications plus any

future ones with the recommendation that the approval be granted only if the applicant agrees to the 300 m septic discharge setback or EIS condition along with a 10 Acre lot + 100 ft frontage minimums plus retention of natural vegetation in the 30 m dwelling setback.

The Canadian Thousand Islands Heritage Conservancy (C.T.I.H.C.)

The C.T.I.H.C is a local organization dedicated to protecting the natural and cultural resources for the benefit of present and future generations. Until now it has been active only in the Thousand Islands area but because of increasing requests from people ‘north of 401’, the Conservancy is expanding its mandate to include the Thousand Islands Watershed north to the Rideau system and it will shortly adopt a new name to reflect this new mandate. As the Gananoque River Waterway will be one of its priorities, Alistair Burnett has agreed to act as the liaison from the GRWA.

The Conservancy is a land trust organization of volunteer members who help landowners make decisions about using their property in ways that might preserve the natural and/or historic characteristics according to the landowner’s wishes. They meet with landowner to explain the choices available. A series of pamphlets, *Landowners’ Conservation Options*, detail different approaches from informal stewardship agreements to formal conservation easements. The C.T.I.H.C. also connects landowners with knowledgeable professionals who provide expert assessments and can give advice on the legalities and tax benefits.

For further information about becoming a volunteer or questions about your land contact: Dave Warner, 613-923-2054 or www.1000islands-conservancy.on.ca/

Thanks Alistair for your contributions in this very important endeavour.

UNCONTAINED OPEN AIR BURNING

1) You **MUST** have a permanent PERMIT available from the Township offices.

2) On any day that you plan to burn you **MUST** PHONE 1-800-285-0774 to listen to & follow all the instructions.

Cataraqui Region Conservation Authority

Our responsibility and purpose, under the provincial *Conservation Authorities Act*, is to further the conservation, restoration, development and management of natural resources (excluding gas, oil, coal and minerals) in our jurisdiction.

A Conservation Authority's jurisdiction (map at right) is based on a watershed — an area of land drained by one stream or river. The CRCA is actually made up of ten watersheds, including the large Cataraqui and Gananoque river systems, as well as smaller systems like Wilton and Buells Creek

New in 2005

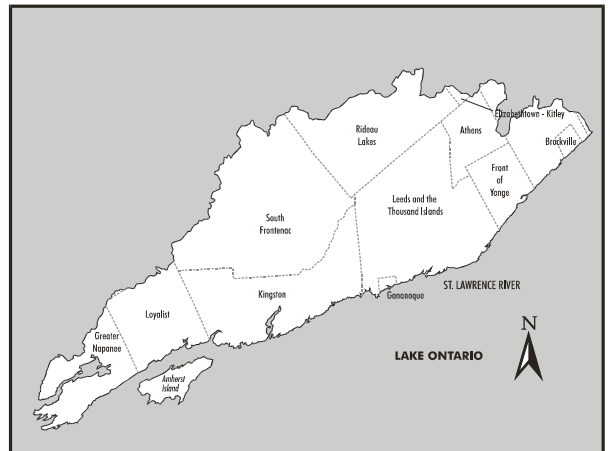
The recommendations of the Walkerton Inquiry have had a tremendous impact on our communities. Protection of water at the source, particularly through the development of watershed plans coordinated by conservation authorities, was a key recommendation. Many details of source water protection planning were announced in 2004. The CRCA, besides continuing to provide its traditional services, has received funding from the Province to begin work on this new service in 2005.

Our Accomplishments in 2004

The CRCA celebrated our 40th anniversary in 2004. We also worked on the following projects:

- Began a project to identify key areas of natural heritage in the City of Kingston and Loyalist Township. This will identify areas to protect and areas to enhance.
- Started major improvements to the entrance area at Marshlands Conservation Area, the southern terminus of the Rideau Trail.
- Continued repair work at our dams, with expectation for future phases.
- Continued educational workshops on shorelines and erosion and sediment control for landowners and contractors.
- Provided assistance to farmers to make environmental improvements on their properties.
- Increased attendance at our conservation education programs for area schools.
- Improved a number of CRCA properties and related programs with the help of a Human Resources and Skills Development Canada employment program.

For More Information:
visit our website www.cataraquiregion.on.ca
or call our office at (613) 546-4228.



CRCA Facts at a Glance

- The CRCA has been in the natural resource business for more than 40 years
- Our jurisdiction is a watershed with more than 3500 sq. km of land.
- We serve a population of about 200,000.
- The CRCA owns more than 4000 hectares of conservation land including conservation areas, boat ramps, trails, dams, environmentally sensitive areas, forests, and wetlands.
- Our conservation areas receive more than 450,000 visitors each year.
- More than 7,000 school children participate in our conservation education programs annually.
- We operate 7 dams and 3 water control structures.
- We review over 500 development applications each year.
- We have planted more than 1.5 million trees since 1983.
- The CRCA works in partnership with 11 municipalities, other government agencies, community groups and area residents.
- There are 17 members appointed by our municipalities on the CRCA board of directors.
- The average cost per capita to local taxpayers for our basic programs and services is \$4.32 per year.